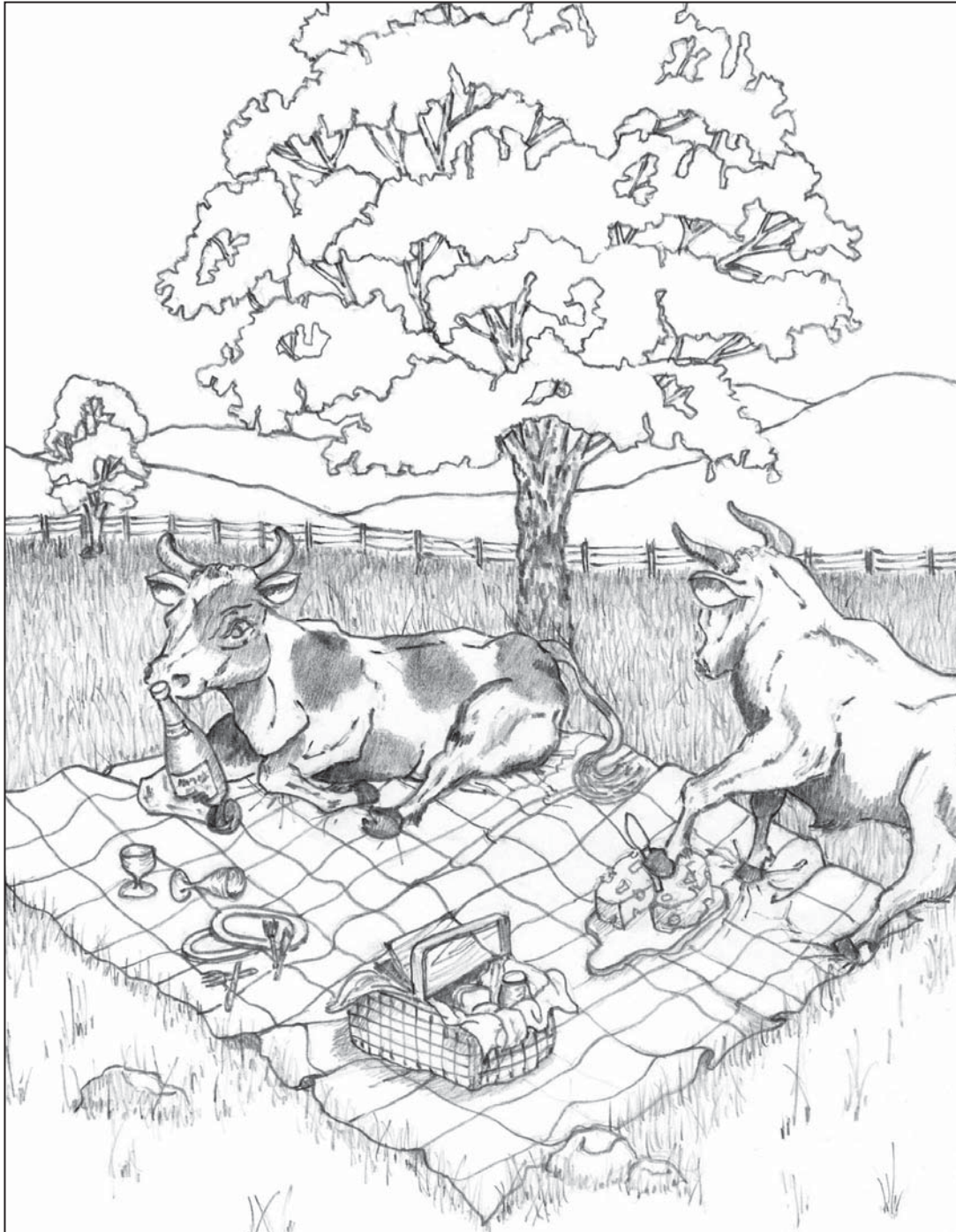


# Contour Notes

*Publication of the Wisconsin Regional Artists Association*

*Fall 2011*



*George Cunningham, Madison, "Wisconsin Picnic"*

# UW-Madison ONLINE art classes

It's like having a personal trainer for your art

## **Art exploration: painting, drawing, and mixed media**

What is your next step as an artist? Is it a new medium; improved drawing or painting skills; color, composition, or content development? You choose! Collaborate with the instructor on a five-lesson plan focused on what you want.

## **Advanced art critique for artists**

Are you seeking authentic voice, a stronger more consistent body of work, or a new direction? All media are welcome. You have five contacts with the instructor about what matters most to you.

## **Drawing landscape**

Learn techniques to draw what you see and feel about a particular scene. Artists at every level of experience access links to landscape drawings in major museums, techniques, and online resources.

## **New online instructor**

**Helen Klebesadel**, an experienced artist, teacher, and mentor offers unique online courses to develop your artistic skills and creative voice. Visit <http://klebesadel.com> to learn more.

- Experience individual guidance and supportive critique from an expert teacher and artist
- Submit art by mail or online for feedback.
- Work at your own pace and take up to a year to finish.
- \$120-\$139 per course.
- Easy online registration at: [www.dcs.wisc.edu/lsa/online](http://www.dcs.wisc.edu/lsa/online)



**Continuing Studies**  
UNIVERSITY OF WISCONSIN-MADISON



If you haven't yet visited us, check it out! It is WRAA's very own website of everything WRAA & WRAP. Find printable registration forms for membership, WRAP exhibit/workshops, Bridging Generations Youth Arts Exhibit, STAMP Exhibit, "State Day" registrations, etc. Our site links to UW-Madison's Dept. of Continuing Education for a complete listing of upcoming WRAP workshops & exhibits. You will also find archived WRAA exhibits of Bridging Generations, STAMP and so much more! Visit soon and visit often.

**wraawrap.com**

### State Exhibit

### Catalogues available!

We have back issues of the 2008, 2009 and 2010 "State Exhibit" color catalogues.

Copies are \$10.00 each which includes postage. Please contact Cheryl Breunig for more information at 608-643-2016 or [cherylbr3@gmail.com](mailto:cherylbr3@gmail.com).

*A great gift for friends & family*

Send articles, member news, artistic happenings, etc., to the editor, Cheryl Breunig, at [cherylbr3@gmail.com](mailto:cherylbr3@gmail.com) or mail to: E10699 Keitel Rd., Prairie du Sac, WI 53578.

The editor reserves the right to select the articles and advertisements for publication.

# Contour Notes

Vol. XXXXXV no. 3 \$3.50 Fall 2011  
Published by Wisconsin Regional Artists Association

### WRAA & WRAP News

WRAA Board of Directors Listing .....	4
WRAA Board of Directors Election Results .....	6
WRAA Membership Renewal Information .....	25

### Upcoming Events

Evening With the Arts .....	6
Tiny Treasures "Buy-it-Now" Has Begun .....	7
2012 <i>Contour Notes</i> Cover Contest .....	27

### Features & Fun

Bridging Generations Workshop day .....	5, 24
Chat'n Chocolate .....	7
A Tribute to Ray and Dorothy Spaulding .....	8, 9
Thank You .....	13
Art Event .....	23

### WRAP Workshop Results & Articles

Tomah .....	10
Monroe .....	10
Waukesha .....	11
La Crosse .....	12
Eagle River .....	12
Waupaca .....	13
Whitewater (summer) .....	14
Hartford .....	15
Rhineland .....	15

### The WRAP Brochure

The WRAP Map .....	17
What is WRAP? .....	17
How to Enter, Typical Workshop Day .....	18
WRAP Entry Form .....	19
Upcoming WRAP Workshops .....	20-23

### 2011 Event Registration Brochures

State Art Conference Day Registration Form .....	16
Evening with the Arts .....	25, 26

### Our Supporting Advertisers

UW-Madison Online Art Classes .....	2
Lynn's Supplies for Creative People .....	27

*On the cover...2010-2011 Contour Notes cover contest 1st place winner, George Cunningham, "Wisconsin Picnic."*

# WRAA Board of Directors

## President

Mary Ann Inman (08-11)  
316 Church St., Clinton, WI 53525  
(608) 676-4853 inman\_ma@yahoo.com

## Vice President

Bruce Braun (09-12)  
2277 Gold Dr., Fitchburg, WI 53711  
(608) 271-7796 njbbbb@charter.net

## Recording Secretary

Mary Lou Lindroth (08-11)  
13773 Chevron Dr., Rockton, IL 61072  
(815) 624-8504 marylou1\_1950@yahoo.com

## Membership

Beverly Balakhovsky (10-13)  
625 N. Segoe Rd #902, Madison, WI 53705  
(608) 237-6362 wraa.membership@yahoo.com

## Treasurer

Beverly Larson (09-11)  
1867 Briarwood Ln., Fitchburg, WI 53575  
(608) 835-7388 bllarson@chorus.net

## Awards Chair

Sharon Stauffer (09-12)  
390 Merry Christmas Ln., Mineral Point, WI  
53565 (608) 987-1560 srssharon@aol.com

## Grant/Applications Writer

Jean Lang (09-12)  
6314 Clovernook Rd., Middleton, WI 53562  
(608) 824-9655 jeanalamo@aol.com

## Nominations/Publications

Vina Yang (10-13)  
3423 Ice Age Lane, Verona, WI 53593  
(608) 798-1005 vyang@aol.com

## Evening With the Arts

Gail McCoy (10-13)  
199 Stagecoach Cir., Sun Prairie, WI 53590  
(608) 837-4225 mccoyskj@yahoo.com

## WRAP Workshop Coordinator

Sherry Ackerman (08-11)  
1205 N. Parkview St., Cottage Grove, WI 53527  
(608) 445-2517 sherryackerman@frontier.com

## Youth Programs Chair (appointed)

Lisa Humke  
614 Uplands Drive, Dodgeville, WI 53555  
(608) 935-5010 humkehome@frontier.com

## Editor (appointed annually)

Cheryl Breunig  
E10699 Keitel Rd., Prairie du Sac, WI 53578  
(608) 643-2016 cherylbr3@gmail.com

# WRAA is the Wisconsin Regional Artists Association

WRAA is a statewide association of artists with a current membership of over 550. WRAA started in July 1954 with 35 members under the mentorship of Professor James A. Schwalbach of the Extension Art Department, University of Wisconsin, Madison.

WRAA is a non-profit organization governed by a board of directors elected from and by the membership. These are volunteer positions. Board members attend two board meetings each year, the spring and fall annual meetings in Madison. Current board members are listed on page 4 of *Contour Notes*.

WRAA works closely with UW-Madison Department of Liberal Studies and the Arts by assisting with regional shows, the State Annual Art Conference and the financial management of state award funds. *Contour Notes* is the quarterly newsletter of the WRAA, covering WRAA news, WRAP regional news, WRAP and state art exhibits and the WRAP Brochure. The editor welcomes contributions, local and club news.

## WRAP is the Wisconsin Regional Art Program

WRAP is a program developed and administered by the UW-Madison Department of Liberal Studies and the Arts. This program is supported in part by funds administered through the UW-Extension as part of a coordinated statewide Extension Program.

The Wisconsin Regional Art Program began in 1940 to encourage the creative growth of Wisconsin amateur artists from rural areas. The first Rural Art Exhibit was held at the Memorial Union, UW-Madison, 1940.

Regional art shows are now held throughout the state, hosted by local art clubs and individuals. Meritorious works chosen from these shows are eligible to exhibit in the Annual State Art Exhibit in Madison.

WRAP State Art Conference is held annually in September at UW-Madison, and is co-sponsored by the UW-Madison and the WRAA.

WRAP regional shows are announced in each issue of *Contour Notes* and available at [www.dcs.wisc.edu/lisa/art/wrap](http://www.dcs.wisc.edu/lisa/art/wrap)

## WRAP Director:

### Leslee Nelson

UW-Madison, Dept. of Liberal Studies and the Arts  
(608) 263-7814, 1-877-336-7836 or [lnelson@dcs.wisc.edu](mailto:lnelson@dcs.wisc.edu)  
Room 7356, 21 North Park St., Madison, WI 53715

WRAP website: [www.dcs.wisc.edu/lisa/art/wrap](http://www.dcs.wisc.edu/lisa/art/wrap)

WRAA website: [www.wraawrap.com](http://www.wraawrap.com)

## Fond du Lac Area Foundation

*From one generation...To the next*



*Contour Notes* is supported in part by grants from the Fond du Lac Area Foundation, Harold C. Berkhof Fund and the Wisconsin Arts Board with funds from the State of Wisconsin and the National Endowment for the Arts.

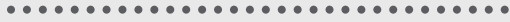


# "Prints and Printmaking"

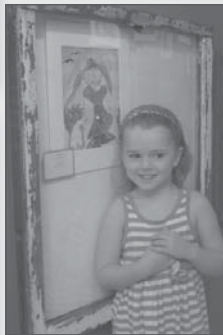
2011 Bridging Generations Youth Art Workshop

By Cheryl Breunig

Photos by Angela Johnson, Sherry Ackerman & Cheryl Breunig



The 2011 Bridging Generations Youth Art Exhibit and Workshop was held July 6<sup>th</sup>- 30<sup>th</sup> at the Madison Children's Museum in downtown Madison. The works of 56 young artists was on exhibit at the museum and also is (still) on-line at our WRAA website. Participating artists ages ranged from four to 13. Media's were varied--crayon, colored pencils, markers, ink, oil pastels, found objects, acrylics and mixed media. One unique piece was composed of dryer lint. The Madison Children's Museum held an exhibit opening celebration on July 7<sup>th</sup>. Guests were treated to animal crackers and lemonade while they viewed art and met some of the young artists in attendance.



The workshop Day concluded with coordinator Angela Johnson reading the names of the artists and handing them an award packet which included a participation certificate, art supplies and a five dollar award.

We thank the Madison Children's Museum's youth arts coordinator, Angela Johnson, and her interns, Carolyn and Diedra for coordinating this year's exhibit and workshop. It was a special event for all.

The exhibit may be viewed on-line at [www.wraawrap.com](http://www.wraawrap.com). Click the "Bridging Generations Youth Art Exhibit and Workshop" link on the left side of the home page. Each artist has their own page featuring their artwork, age, media and their

WRAA sponsor's name. You may leave encouraging messages to the artists and read messages that others have left. Artwork from past Bridging Generations exhibits may be viewed, also. ♦



WRAA member Shirley Diedrich and her granddaughters, Mikaila & Olivia.



Above; Sherry Ackerman, exhibit coordinator Angela Johnson, Cheryl Breunig and Vina Yang

The colorful exhibit concluded Saturday, July 30<sup>th</sup> with a workshop day for artists and their families where the children learned how to make block prints. They carved a design (the theme had something to do with water) with the point of a pencil on an orange block. Then they squeezed paint from a tube onto plexiglass and smoothed the paint out with a roller. They put the block into the paint and then pressed it on paper, creating the reverse image. Some experimented with changing colors, the amount of paint and rotating the block.

## 2011 Bridging Generations Award Donors

- The Five Painters*
- Jack Dennis*
- Lodi Art Club*
- Mary Lou Lindroth*
- Norma Estrada*
- School of Eclectic Art*
- Lakekand Art League*
- Stateline Artists*
- Vina Yang*
- Waukesha Creative Art League*
- Chinese Fine Art Association*
- June Buchanan*

Our thanks to your generous donations to help encourage children to make art.



Mary Cuff (center) with her daughter and granddaughter, Eve. Granddaughter, Maia, is in photo above standing by her artwork.

Do you know a young artist that you can sponsor next year? It's never too soon to start planning. Registration brochures will be available January 2012. You may download and print them at [www.wraawrap.com](http://www.wraawrap.com) when available. A WRAA member may sponsor as many children as they would like. Each child may enter one piece of art. Exhibit is open to ages three to seventeen.

More bridging Generations on page 24...

Join us for our sixth annual

# Evening With the Arts

Reception & Celebration of Art

Friday September 23, 2011

6:00 pm to 9:00 pm

Pyle Center, 702 Langdon Street, Madison, WI



WRAA invites all members and their guests to our sixth annual Evening With the Arts gala reception and celebration of art on the evening preceding the annual WRAP-WRAA State Art Exhibit & Conference.

Enjoy the outstanding artworks and award ceremonies from the Wisconsin Regional Art Program, STAMP and TINY TREASURES exhibits, hors d'oeuvres, beautiful music and the company of fellow artists.

For complete information please see the enclosed information/registration brochure on page 25 & 26 of this issue or visit [www.wraawrap.com](http://www.wraawrap.com) for a printable version. Questions, please contact Gail McCoy at 608.837.4225 or [mccoygkj@yahoo.com](mailto:mccoygkj@yahoo.com)

## WRAA Board of Directors Election Results

By Vina Yang, Nominations Chair

WRAA is proud to announce the newly elected WRAA Board of Directors. They are Mary Ann Inman of Clinton, Beverly Larson of Oregon, Sherry Ackerman of Cottage Grove and Marilyn Knipfer of Deerfield, all to serve a three year term.

**This year's Evening With the Arts, WRAA's gala celebration is Friday, September 23, 2011 at the Pyle Center, UW-Madison.**

**This year's Annual State Art Exhibition and Conference, "State Day" is Saturday, September 24, 2011 at the Pyle Center, UW-Madison.**

Find the "State Day" registration form on page 16.

For printable "State Day" registration form, visit [www.wraawrap.com](http://www.wraawrap.com)

## Tiny Treasures Buy-it-Now™ has begun!

### What is a Tiny Treasure?

Tiny Treasures are 2 1/2" x 3 1/2" pieces of art made by artists, WRAA members and non-members alike. They were submitted and now are exhibited on-line (click "Tiny Treasures 2011 Exhibit/Competition" at [www.wraawrap.com](http://www.wraawrap.com)); will also be on exhibit at the Pyle Center in Madison, dates indicated to the right. These wonderfully clever and beautiful works of art are for purchase in our "Buy-it-Now" sale as a fundraiser to benefit the WRAA Publication Fund. Fifteen Tiny Treasures will be chosen to be included in the 2012 WRAP pocket calendar.

### What is the "Buy-it-Now" fundraiser?

All Tiny Treasures are posted on-line at [www.wraawrap.com](http://www.wraawrap.com) and are available for anyone to buy for \$25.00. "Buy-it-Now" on-line will end on September 22, 2011. Tiny Treasures can also be purchased in person at "Evening with the Arts" on September 23 and on State Day, September 24, 2011 (until noon).

### How do I purchase (Buy-it-Now) Tiny Treasures artwork?

E-mail Sherry Ackerman at [sherrycackerman@frontier.com](mailto:sherrycackerman@frontier.com) and let her know which piece(s) you are interested in. She will confirm the availability of the piece(s) and make arrangements for payment. Please note that some pieces in the exhibit are not for sale, and are indicated in the description in the Tiny Treasures on-line gallery.

### What is "Evening With the Arts"?

Friday night before the annual WRAP State Art Exhibit and Conference Day in September, the Wisconsin Regional Artists Association (WRAA) hosts a gala reception at the Pyle Center at UW-Madison. Enjoy the art of the WRAP Statewide Exhibit, Teen and Tiny Treasures exhibits, hors-d'oeuvres, beautiful music and other activities. This year's "Evening" will be Friday, September 23, 2011. For more information see the registration form on pages 25 & 26. There will also be custom-made frames, made especially for the Tiny Treasures, for sale at Evening with the Arts and on State Day. The frames are made by Niki Russos and come complete with glass and hanging hardware.



*Artwork by Beth White, 2½ x 3½"*

**Tiny Treasures Exhibit**  
August 6 - September 24, 2011  
Pyle Center, UW-Madison

**Reception & Awards**  
at the fifth annual  
"Evening With the Arts"  
September 23, 2011, 6-9 pm  
Pyle Center, UW-Madison

For Tiny Treasures information, please contact coordinator: Sherry Ackerman, [sherrycackerman@frontier.com](mailto:sherrycackerman@frontier.com) or (608) 445-2517

## CHAT'N CHOCOLATE

### OUR STORIES of WRAA & WRAP

#### *My Story:*

Tiny Treasures was a wonderful experience. It gave me the opportunity to express myself and show my work. Last year I had the honor of exhibiting an etching at the State WRAP Exhibit. I'd like to work more at art and exhibit again.

*Gilma Arenas*  
Madison

#### *My Story:*

I'm amazed at the creativity among local artists and look forward to touring more exhibits. This is an excellent venue for the many people here that have so much talent! Thank you.

*Candice Groebner, Greenville*

#### *My Story:*

When I was a graduate student in 1977 I wrote a paper on WRAP and interviewed Ken Kummerlein. He invited me to see the exhibit at the Pyle Center. He was so enthusiastic about the program. I wrote a paper that got an "A." Then in 1982 Ken retired and I was hired to replace him. What a wonderful completion of the circle. Now I tell everyone how wonderful WRAP is.



*Leslee Nelson*  
Madison

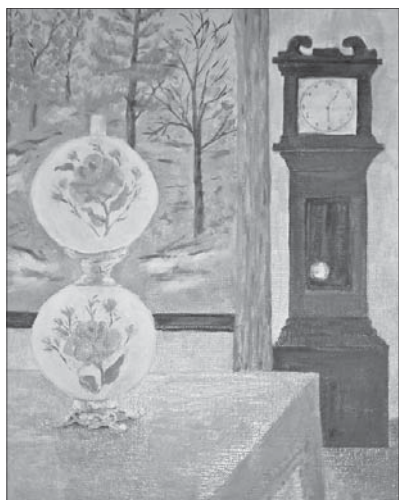
# A Tribute to Ray and Dorothy Spaulding

*Pioneers of Rural Rembrandts Art Club and WRAA*

*By Gail Schwersenska*

Ray and Dorothy Spaulding were married in May of 1945. They owned a small ice cream and candy store on Main Street in Wautoma. Shortly after they were married, Dorothy discovered Ray's love for drawing. That Christmas she gave him a small set of oil paints as a gift and the rest, as they say, is history.

Both of them discovered they liked to paint. They were eager to learn as they explored the world of art. They bought books on drawing and painting and enjoyed experimenting with perspective and shading. They also learned that their dear friend and fellow business woman, Beatrice Keitzer was also an artist. "Bea" owned a small café, also on Main Street. The two couples had socialized together and their two daughters had played together.



*"Still Life," oil, by Dorothy Spaulding.*

the café, became the informal get togethers where the adults could visit and draw and the kids to could play.

Word spread that there were folks interested in learning how to draw and paint and the circle of artists gathering at Bea's continued to grow. The Rural Rembrandts Art Club was formed. The club was opened to anyone interested in the arts and who was not a trained, professional. The club grew and flourished and soon had members from around Waushara County and beyond.

Soon Ray and Dorothy were wondering if they could get someone give instructions. Ray had been trained as a teacher and remembered the University of Wisconsin Extension radio program "Let's Draw" hosted by Professor James Schwalbach. Ray talked to the local extension office and learned that Professor Schwalbach was interested in expanding the reach of art instruction across Wisconsin. Instructors were located and meetings became

a time for learning as well a time for friends to gather. This connection resulted in a life long friendship between the Spauldings and Jim Schwalbach. The Wisconsin Rural Artists Association was formed a few years later with Ray as its founding President. The goal of WRAA was simple, to recognize, teach and advance amateur art in Wisconsin.

In Wautoma, the Rural Rembrandts realized that there was no venue to show their art and decided to hold an outdoor art show. With the help of the city council, Wautoma was turned into the "Streets of Paris." Two blocks of a main side street were shut down for three days as the art work was displayed, a "Miss Paris" contest took place and a street dance capped off the event. The local depot master's wife was French, so with her assistance, the stores along Main Street were renamed, with their new French names lettered on the windows by Ray. The



Rembrandts got together and created a large backdrop of the streets of Paris, replete with the Eiffel Tower. In keeping with the theme the Rembrandts wore French berets. Dorothy so loved the beret, it became her signature head wear. Up until her death, she wore a beret when she went out.

Each day of the event, paintings were carried out in the morning and displayed on large racks. The extension office was helpful in finding a judge for the show. When judges were



*"Hen Party," oil, by Ray Spaulding.*

selected, they were asked to prepare a public critique of their selections. This was important to the Rembrandts as part of their teaching mission. As the members aged, the show went from the three day event down to one day, but remained the longest running outdoor art show in Wisconsin. In keeping with the purpose of the club, the show as open only to amateurs and in the early years, selling was prohibited. Many artists set up demonstrations, including weavers, potters and, of course, painters. People came from all over Wisconsin to display their works. Long time friendships resulted from these shows with people returning year after year.

As times changed with less foot traffic in the ice cream shop and the advent of drive-in restaurants, they closed the store in 1958. Ray had already started working as a professional sign painter in Oshkosh and Dorothy ran the store alone. After the store closed, she worked as a cook in the local hospital until she retired. They purchased a small farm just outside of Wautoma. This was a place that Ray and his family had farmed and a place he had always wanted to own. Ray started his own sign business and in 1966 successfully ran for and was elected as Waushara County Treasurer. He remained treasurer until his retirement in 1983. He continued his sign business up until the time of his death.

In 1978, at age 63, Dorothy underwent back surgery. The result of this surgery left her a paraplegic. She faced this new challenge like she faced everything else in her life, with a sense of humor and Ray at her side. They had been in the midst of building their retirement home and were able to make small modifi-

cations to accommodate her disability. She was fiercely independent and told family and friends she wanted to do things for herself and if she needed help, she'd ask for it.

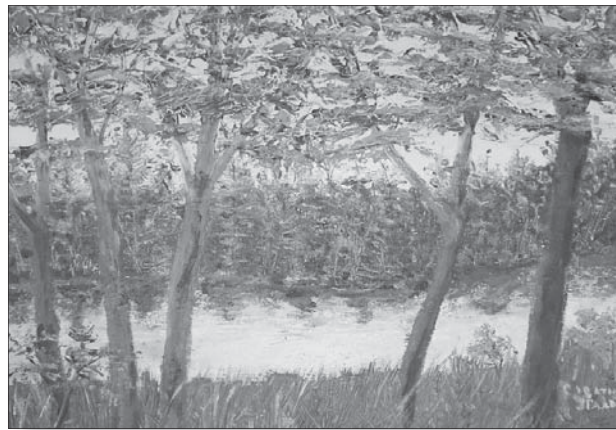
Both Ray and Dorothy remained active in the local art club as well as WRAA. Dorothy served as an officer and Ray as her chauffeur. They continued to study and try different forms of art. They painted, did pottery and even wood carving. Over the years, Ray found his favorite medium was acrylic as he often said he didn't have the patience to let the oils dry. His paintings were quite realistic and usually displayed his clever sense of humor. Dorothy wasn't afraid to try all different medium; however she always came back to her first love, oils. Her style was less realistic and more impressionistic. They were so very proud of the fact they were both recipients of the John Steuart Curry medal. They treasured the medals and have passed them on to each of their daughters.

In the 1980's Dorothy worked with the local Department of Aging to organize a day-long art day at the local middle school. Members of the Rembrandts spent the day at the school, demonstrating their art work and spending time with the students introducing them to all of the different fine arts. As the event grew, even local musicians came and played. It was important for Dorothy to show the children that individuals with a disability could be creative and part of the community.

In 1989, Ray passed away as the result of complications from surgery. Dorothy remained in her home, first with the support of family and friends and then with the assistance of paid caregivers. She enjoyed her "girls" who soon were as much family as her two daughters. She loved being in the woods with her dog. She had a four season room added to her home and that became her studio. She continued to paint until her early 90's when her eyesight was no longer good enough. On March 9, 2011 Dorothy died peacefully, in her home at age 95. She leaves behind a long legacy of encouraging and promoting art in rural Wisconsin. More importantly, she lived her life as a testament to her faith and love of life.



*"Balanced Diet," acrylic, by Ray.*



*"Landscape," oil, by Dorothy Spaulding.*

*Gail Schwersenska, is one of two daughters of Ray and Dorothy Spaulding. She works in Madison as the director of the state office on aging and lives on a wooded parcel of land across the farm from where Ray & Dorothy lived. When her parents sold their farm, they kept the woods and divided the parcel into two--one for Gail and one for her sister. Gail and her husband (David) bought their parcel from Dorothy in 2002 and built what they hope is their retirement home on the "north side of the woods." Gail's son and daughter-in-law live in Wautoma with their daughter (mom's great-grand daughter). Gail's sister, Lynn, and her husband, (Dennis) reside in Oshkosh. She has a disability and is in assisted living. Lynn has two children, Mark, who lives in Oshkosh, and Debra who lives between Berlin and Oshkosh and is married and has a blended family. In all Ray and Dorothy have three grandchildren and five great grandchildren and two step-grandchildren. At the time of Dorothy's passing they ranged from ages eight to early 20's, so she was able to see them born and grow up, which she said often she felt so fortunate to see that next generation. She had a very strong sense of family. Gail hopes in retirement she can once again pick up her pen, ink and watercolor--she has the perfect studio space waiting for her in her home in the woods. Her children and grandchildren are artistic and encouraged to be creative. You may contact Gail at gailschwer@centurylink.net.*

# Tomah

April 30, 2011 ~ Community Theater Building

Sponsor: Tomah Arts Guild (TAG), Coordinator: Ginny Schuld

## WRAP State Awards

Gail Hitchcock, Elroy  
"Grandma's Kitchen," acrylic

Joan Walker, Humbird  
"Wind-My Nature Spirit," oil

Fred Weiner, Warrens  
"The Engineer," charcoal and watercolor

Craig Zahrt, Warrens  
"Turtle?"  
ceramic

## WRAP Honorable Mentions

Malinda Flock, Sparta  
"Tranquil Reflections"  
watercolor

Del Lucka, Tomah  
"Old Barn," watercolor

Judy Pulaski, Elroy  
"Going to Pasture," acrylic

Lillian Marie Ruda, Merrilan  
"Daisies," watercolor



Tomah Art Guild deems its first WRAP Show a super success. Twelve entries and 35 pieces of art work made a splendid exhibit in the Area Community Theater's second floor reception area. Juror watercolorist Ellen Roles of LaCrosse gave an interactive informative presentation lauded by all in attendance. Congratulations to all for a job well done!



# Monroe

April 30, 2011 ~ Monroe Arts Center

Sponsor: Monroe Arts Center, Coordinator: Dunnell Kendrick

## WRAP State Awards

Sally Conway, Beloit  
"Pittsburgh Steel Mills," watercolor on Yuppo

Tom Fjelstad, Mount Horeb  
"Past Haunting," oil on panel

Charlotte Heikkinen, Clinton  
"Hank! What Are You Chewing On Now?"  
watercolor

Barbara Leonard, Janesville  
"Iris," watercolor

Nancy McKinnon, Janesville  
"Leaving Glacier Bay," watercolor

Joe Simonette, Monroe  
"Yester Year's," wood

Helen Stauffer, Monroe  
"Majestic Rigging," photography

David Waldera, Menomonie  
"City Lights," acrylic

## WRAP Honorable Mentions

David Carpenter, Madison  
"Pinky," colored pencil

Roger Dorneden, Apple River, IL  
"Fun-Guy," photography

Susan Ivanko, Monroe  
"Arnold Imobersteg's Gift to Monroe,"  
watercolor

Mike McKinnon, Janesville  
"Monarch Moment"  
photography

Donna Miller, Madison  
"Water Lilies at Getty Mansion"  
oil

Jane Kraeuche Olson, New Glarus  
"Season's End," watercolor

Darra Porter, Brodhead  
"Three Peppers at Decent Intervals"  
acrylic

Robert Williams, Janesville  
"Mist Signals Winter"  
watercolor

## WRAP State Awards

David Carpenter, Madison  
"Cattleya," colored pencil

Elizabeth Clayton, Brookfield  
"Meditating Crows," watercolor

Polly Edgar, Hubertus  
"Recess," watercolor & ink

Marilyn Eldien, West Allis  
"Single Beauty," watercolor on rice paper

Shannon Finger, Waukesha  
"The Docent," oil

Jennifer Hanson, Madison  
"Pods," photography

Darlene Jansen, Whitewater  
"Poppy," photography

Barbara Kelsey, Pewaukee  
"Mork and Mindy," oil

June Kilgrin, Waukesha  
"Are We There?"  
pyro carved leather dyed

Barbara Kraetsch, Hartford  
"Tahrir Square," water based oil

Susan Porubcan, Jefferson  
"Susan's  $\pi$  (Pi)," watercolor

Susan Schwegel, Muskego  
"Lemon Yellow," oil

Pandre Stauff, Elm Grove  
"Winter Crane,"  
Oriental brush w/gold & silver

Christine Steinmiller, Sullivan  
"Reading Room," acrylic

Jan Wood, Muskego  
"Eggs? What Eggs?"  
acrylic on paper maché sculpture

## WRAP Honorable Mentions

William Balthazor, Oconomowoc  
"Riverview Farm," oil

Sam Berta, Wauwatosa  
"Panda's Snack," Oriental brush

Katie Calhoun, New Berlin  
"Bear Country,"  
digital photography

Deborah Eastwood, Waukesha  
"Master Garden," oil

Jim Franecki, Hartland  
"Pastel Beach," oil

Patricia Gergez, West Bend  
"Iris," watercolor

Anne Goode, Waukesha  
"Serendipity," watercolor

Steven Gyarmaty, Milwaukee  
"Winter Farm," digital photo on frost

Emma Macari, Brookfield  
"Chambered Nautilus," watercolor

Susan Mortensen, Hartland  
"Interior in Winter," watercolor

Kathryn Peters, Waukesha  
"Tapestry Rose," watercolor

Nancy Peterson, Waukesha  
"Falling Gold," pastel

Margaret Schumann, North Prairie  
"Emergence," watercolor

John St. Onge, Waukesha  
"Almont at Night," watercolor

Linda Steinlein, Oconomowoc  
"Woman of Peru," watercolor

## Waukesha WRAP 2011

by Kathleen Hosch, Dousman

The Waukesha WRAP Exhibit was again sponsored by the Waukesha Creative Arts League. Over 50 artists and guests were greeted and treated to coffee and breakfast snacks while they were able to get a final look at the exhibition and vote for the people's choice awards. There were 46 artists exhibiting 104 paintings and 4 sculptures. Several of the exhibitors were new to a WRAP Exhibit.

The workshop was conducted by Nancy Newcomb of Lake Geneva. Nancy's education began with a scholarship to the Art Institute of Chicago, followed by study at Northern Illinois University and the Milwaukee School of Art and Design. She has taught many classes and seminars throughout the East Coast and the Midwest. Nancy has been published in several magazines and has exhibited in many galleries and is represented in the Miller Art Museum in Sturgeon

Bay, Wisconsin. For the lecture, Nancy demonstrated a watercolor painting on an easel. The workshop was enjoyed by all and there were several good comments about her technique. Not only is Nancy a great artist, but is also a great entertainer.

The exhibit juror was Lorin Willey from Rosedale, Wisconsin. He has judged many art shows and many WRAP Shows. Lorin's critique of the state awards and honorable mentions was very informative. He stated that he was not judging the person behind the art, but the art itself. Lorin was looking for paintings/drawings that made a statement as well as telling a story. He looks for how a painting reads from a distance. Does it make a statement? Composition, design and drawing proportion, boldness and confidence, value, color execution and interest rate highly in his selections.

# La Crosse

May 21, 2011 ~ The Pump House Regional Art Center

Sponsor: La Crosse Society of Arts and Crafts, Coordinator: Carol Witt-Smith

## WRAP State Awards

Carol Gepner, Madison  
"Allium," watercolor

Jerrine Kellicut, La Crosse  
"Peace," clay vase

Mark Lajiness, La Crosse  
"Trumpet Beast," mixed media

Toni Paisley, Onalaska  
"Dancing in the Light of the Tuscan Sun"  
fiber

Teri Talpe, La Crosse  
"Veiled"  
digital photography

Bill Zierke, Onalaska  
"Sunrise Apples," acrylic

## WRAP Honorable Mentions

Karl Kattchee, La Crosse  
"Three Strange Dreams"  
digital photography

Penny Stroning, Blair  
"Point Bonita Overlook," watercolor

Sally Cremer, Onalaska  
"A Rose is a Bunch of Roses"  
acrylic

Elizabeth Larson, Elk Mound  
"Last Beach," watercolor

Carol Witt-Smith, Onalaska  
"Impressionist Gazing Ball"  
glass mosaic

## Eagle River WRAP Workshop

by Eleanor Lapp, Land O'Lakes

Twenty-one artists exhibited 50 pieces of art at the Eagle River WRAP show in northern Wisconsin, sponsored by the Headwaters Art League and held at the Olson Memorial Library in Eagle River.

Artist Wendy Powalisz, was the show judge and the workshop presenter. The workshop featured a technique using liquid latex as a resist for watercolor paintings that created batik-like effects. Participating artists had the opportunity to try the technique on sample papers.

The afternoon critique was conducted by Wendy and each exhibitor had an artwork discussed. Audience

members along with the piece's artist added comments and questions. Wendy focused on the importance of the physical presentation of each piece--such as matting, frame size and color options. She stressed that artwork is more than technique--it must also have "heart."

Wendy Powalisz has been part of the Studio Gallery in Boulder Junction and is currently with the Artistree Gallery in Land O'Lakes. She has shown her work in local, regional and national shows and also travels with the Art Gypsies. She teaches privately and for the nonprofit arts organization, Land O'Lakes Artisans, Inc (LOLA).

## Eagle River

June 4, 2011 ~ Olson Memorial Library

Sponsor: Headwaters Art League, Coordinators: Eleanor Lapp and Jane O'Brien

## WRAP State Awards

David Alspaugh, Three Lakes  
"Bird," found art

Marlyn Hupperts, Eagle River  
"Sweet Amaryllis," watercolor

Nancy Nyleen, Star Lake  
"Peace Lilies," textile/needle weaving

Mimi Ruff, Pewaukee  
"Siesta Key," watercolor/pastel

Sandra Slagle, Eagle River  
"Fall in the Northwoods," oil

Barbara Whenal, Tomahawk  
"Phoenix"  
mixed media

Helen Wolk, Minocqua  
"To Lucy," ink on Arches

## WRAP Honorable Mentions

Bob Corriveau, Eagle River  
"Horse"  
relief carving

Teresa Dorn, Land O'Lakes  
"God's Country #3," oil

Jill Edwards, Land O'Lakes  
"Fall Splendor," photography

Dorothy Grems, Land O'Lakes  
"A Chorus of Frogs," watercolor

Nancy Paquet, Rhinelander  
"Cool Water," colored pencil

Michelle Santy, Phelps  
"Celtic Sorceress II," pencil

Linda Youngquist, Land O'Lakes  
"Nature Renews"  
photography

# Waupaca

June 11, 2011 ~ Waupaca Public Library

Sponsor: Rural Rembrandt Art Club, Coordinator: Lee Fenendael & Audrey Bunchkowski

## WRAP State Awards

Bill Dean, Oxford  
"Self Portrait," oil

Susan DeLain, Neshkoro  
"Wet Night," acrylic

Lee Fenendael, Ripon  
"Got Milk?" photograph

Anthony Gassaway, Wautoma  
"God's Way of Business #2," metal sculpture

Helen Jenson, Dalton  
"Aftermath," pastel

Lauren Radke, Wautoma  
"Daydream," digital photography

Ryan Radke, Wautoma  
"Merriitt and Main," watercolor

Pat Spear, Wild Rose  
"36-24-36 Healing Body Image"  
mixed media

Kathy Teichmiller, Oshkosh  
"Desert Scene," ink on Yupo

Peter Worland, Oshkosh  
"Puerto Varas," acrylic

## WRAP Honorable Mentions

Marcia Batley, Menasha  
"Sentinal," photography

Fred Behlendorf, Oshkosh  
"Wintershadows," watercolor

Ellie Buckley, Neenah  
"Coral," watercolor

Cath Eckart, Princeton  
"Back Porch," watercolor

Virginia Jungwirth, Oshkosh  
"What Do You See," mixed media

Karin Livingood, Oshkosh  
"Creation Tempter," watercolor

Joanne Murphy-Herwig, Oshkosh  
"Door Lillies," watercolor

Patricia Paulik, Oshkosh  
"Unmixed," Adirondack ink

Rachel Pavlic, Neshkoro  
"Look for Apples," watercolor on Yupo

Benjamin Sprague, Ripon  
"Drip Drop," photography

Waupaca workshop  
presenter Adriana  
Kamenetsky from  
Arlington Heights, IL.



Right: Honorable Mention winners in attendance, (l-r) front:  
Benjamin Sprague, Joanne Murphy-Herwig, Rachel Pavlik,  
Patricia Paulik; back: Virginia Jungwirth, Karen Livingood.



# Thank You

WRAA owes a big thank you to **Niki Russos** for helping make the Tiny Treasures fundraiser so successful. This year Niki donated her time and materials to make mats for the Tiny Treasures. She also made the wonderful custom frames for the Tiny Treasures last year and again this year. Her generosity is greatly appreciated.

You will notice the Pyle Center has an new art hanging system! WRAA president, **Mary Ann Inman** and WRAA vice president, **Bruce Braun** and **Mary Lou Lindroth**, recording secretary, worked hand-in-hand with **Bill Mann**, Pyle center director and **Leslee Nelson** (WRAP director) to make this happen. A **BIG** thank you for making the job of hanging artwork go much smoother and for making our art look so much better.

# Whitewater ~ Summer

June 25, 2011 ~ Crossman Gallery, UW-Whitewater

Sponsor & Coordinator: Mary Lou Lindroth

## WRAP State Awards

June Buchanan, Cambridge  
"Dolphins I and Dolphins II"  
Chinese pigment on Cicada paper

Ken Byerley, Clinton  
"Bobbin's Head #2," metal sculpture

David Carpenter, Madison  
"Apparition," colored pencil

Sally Conway, Beloit  
"Room With a View #8-Hong Kong"  
collage/watercolor

George Cunningham, Madison  
"Crane Tracks," watercolor

Margie Devereaux, Madison  
"Secret Central Park," watercolor/ acrylic

Lee Lovett, DeForest  
"Beacon on the Prairie," watercolor

Emma Macari, Brookfield  
"Caumus Farm," watercolor

Anthony Pawlowsky, Madison  
"Xkandu," wood abstract

Darra Porter, Brodhead  
"Three Peppers at Decent Intervals," acrylic

Linda Smulka, Madison  
"Pansy Companion," watercolor

C. Steele, Beloit  
"The Day That I Die," acrylic

Christine Steinmiller, Sullivan  
"Strength and Endurance," oil

Judy Werner, Madison  
"Slinky," anodized aluminum

## WRAP Honorable Mentions

Ginny Bores, Madison  
"Cactus Flowers," watercolor

Geri Brady, Burlington  
"Blooms," watercolor on Yupo

Lester Crisman, Walworth  
"Cardinal Love," photography

Angi Dega, Mazomanie  
"Enchanted," metal & gems

Shirley Diedrich, Fitchburg  
"Rosemary's Lilies," watercolor/mixed media

Jan Gorman, Grayslake, IL  
"Odysseys," metal sculpture

Roberta Haakinson, Beloit  
"Haitian Mother and Child"  
watercolor

Dawn Hunter, Whitewater  
"California Poppies in the Moonlight"  
acrylic

Bev Larson, Oregon  
"Bearded Iris #5," watercolor

Donna Miller, Madison  
"Fall Harvest," oil

Pat Mosher, Milton  
"The Sound of Mewsic"  
collage/mixed media

Suzanne Nitzke, Cottage Grove  
"Glee," watercolor

Suzanne Popke, Whitewater  
"Spring in Siberia"  
sand/crystal painting

Jean Tupper, Madison  
"Afternoon Shadows," watercolor

## Whitewater Summer WRAP

by Mary Lou Lindroth, Rockton, IL

The Whitewater (summer) Show, held from June 6th to the Workshop Day, June 25, 2011 was a success. The WRAP show was well attended by artists/family/friends and guests. There was an excellent slide presentation by Mary Diman who presented her work from college to the present. It was interesting to see her work throughout the years. An interesting segment of the slide show was the presentation of each individual's artwork that was in the show.

After lunch, Mary critiqued the award winning pictures. No question was left unanswered for those that arose during the critique. Also, she answered questions that came about from those not receiving an award.

Mary Diman is a Wisconsin native and teaches oil and acrylic painting for the UW Outreach in Madison, Rhinelander School of the Arts and Green Lake Workshops.



She received an MFA and a BS from the UW-Madison. She recently retired

as a scientific illustrator for UW-Madison.

The WRAP show was a very in-depth show with 43 artists showing their best piece as each artist could enter one piece. This WRAP Show was a fun show and I thank the many volunteers who helped in so many ways - to hang the show, helping with the reception and taking the show down.

Left; exhibit judge, Mary Diman, talks with Donette Behar. Above; (l-r), Mary Diman and exhibit coordinator, Mary Lou Lindroth.

# Hartford

June 25, 2011 ~ Schauer Arts & Activities Center

Sponsor: Schauer Arts & Activities Center, Coordinator: Greg Torgeson

## *WRAP State Awards*

David Bielot, Rubicon  
"Oat Fields," watercolor

G. Griesbach, West Bend  
"Faith, Hope, and Charity," shells

Barbara Kraetsch, Hartford  
"Jangled," water based oil

Frederick Kuck, Neosho  
"Iguana," stainless steel

Lisa Niemiec, Hubertus  
"Flatland," photography

Julie Nusbaum, Menomonee Falls  
"Evolution," watercolor

Cheryl Plautz, Hartford  
"Woodchuck Morning," colored pencil

Everett Powell, Richfield  
"Ketchikan, Alaska," watercolor

Barbara Robbins, Hartford  
"Two C-Sections in My Image of Life"  
mixed collage

Pat Siok, Oconomowoc  
"Howth Head," watercolor

Amy Weh, Fort Atkinson  
"Two Sheep," mosaic

Charles Wilke, Campellsport  
"Nearly Forgotten"  
wood carving

## *WRAP Honorable Mentions*

William Balthazor, Oconomowoc  
"Birds of Sanibel," oil

Karis Corteen, Hartford  
"Montana Magic," acrylic

John Edgar, Hubertus  
"Butterfly Triangle," watercolor

Patricia Gergetz, West Bend  
"Quiet Courtyard," watercolor/acrylic

Ellen Gilbert, Hartford  
"Wisconsin Dells, 1983," acrylic/ink

Marcia Hero, Milwaukee  
"Lion's Den Marsh," oil

Louise Joyner, West Bend  
"Regatta," watercolor

Robert Lirette, Menomonee Falls  
"Picket Fence," watercolor

Ray McInerny Sr., New Berlin  
"A Place to Stay," pastel

Tom Petri, Greendale  
"Chick-a-dee," wood/acrylic

Margaret Schumann, North Prairie  
"Flowage," watercolor

Peter Worland, Oshkosh  
"Grand Canyon at Dusk," mixed media

# Rhinelanders

July 9, 2011 ~ Nicolet College Art Gallery

Sponsor: Nicolet College, Coordinator: Katy Ralph

## *WRAP State Awards*

Rosemary Ahmann, Minocqua  
"Petroglyph's Story," mixed media

Rhonda Bengston, Antigo  
"Wild Lupine," acrylic

Niki Childrey, Harshaw  
"Blue Ridge Spring," watercolor

Marcia Clarke, Rhinelanders  
"Corks," watercolor

Palmyra Creed, Rhinelanders  
"Beaded Necklace Basket," woodcraft

Sharon Feathers, Ringle  
"Sunflower," mixed media

Rene Iannarelli, Rhinelanders  
"Autumn Sunset," fiber art

Patrick Plunkett, Wausau  
"What Once Was and Shall Never Be Again"  
fabricated metal sculpture

Bobby Walker, Mosinee  
"Spring Vigil"  
unmanipulated digital photography

Connie Warshall, Harshaw  
"Thread Bare," fiber art

## *WRAP Honorable Mentions*

Linda Watson Adelman, Minocqua  
"Stream After Snowfall," watercolor

Jeanne Baker, Rhinelanders  
"Buttons," watercolor

Kathy Carlson, Argonne  
"Lake Superior Stones II," oil

Bob Chrzan, Tomahawk  
"Seen Better Days"  
photography

Ella Mae D'Aprix, Rhinelanders  
"Hot Peppers," watercolor

Thomas Nitz, Eagle River  
"Topsy," photography

Nancy Paquet, Rhinelanders  
"Zion," colored pencil

Anita Riha, Eagle River  
"Dream Travelers," watercolor

Jim Savada, Tomahawk  
"Four in a Row," watercolor

Kaye Schirle, Hazelhurst  
"Splash of Spring," mixed media

# WRAP/WRAA STATE ART CONFERENCE -- REGISTRATION FORM

## Saturday, September 24, 2011

- 9:00 a.m.     **Registration, coffee, and informal viewing of the exhibition.**  
Time to meet your friends and renew your membership in the Wisconsin Regional Artists Association (co-sponsor with the UW-Madison's Division of Continuing Studies).
- 10:00 a.m     **Artist Presentation** Thomas Lidtke, Director, Wisconsin Museum of Art and Jessie Eisner-Kleyle, Photographer, Art Class Instructor, <http://jessieeisnerkleyle.com>
- 12:15 p.m.    **Buffet Luncheon**
- 1:30 p.m.     **Presentation of Awards** - Annual meeting of the Wisconsin Regional Artists Association
- 3:30 p.m.     Approximate end of the conference day and time to take art work home.

You may register for the entire day; the morning seminar only, or the luncheon only (which includes the afternoon award ceremony). You are welcome to come to the award ceremony at no charge.

----- cut or xerox------(Include with Check)-----cut or---xerox-----

### Wisconsin Regional Art Program REGISTRATION, ANNUAL STATE ART CONFERENCE, September 24, 2011

Name \_\_\_\_\_ Phone (     ) \_\_\_\_\_

Address \_\_\_\_\_

City \_\_\_\_\_ State \_\_\_\_\_ Zip \_\_\_\_\_

E-mail \_\_\_\_\_

Your Name & Guests Name(s) Please print clearly	<i><b>Morning ONLY</b></i>  Art Seminar  \$ 10	<i><b>Afternoon ONLY</b></i>  Luncheon & Award Ceremony  \$ 35	<i><b>Morning &amp; afternoon</b></i>  includes Luncheon  \$ 40	<b>Check all who have art in the exhibit</b>

**Total Amount Enclosed: \$ \_\_\_\_\_**

Make checks payable to **UW-Madison**, send with your artwork OR mail to:  
Pyle Center, Attn: WRAP,  
Dept. 105, 702 Langdon Street, Madison, WI 53706

**Deadline for reservations is September 16.**     No refunds will be available after that date.

# THE WRAP BROCHURE

For information on coordinating a WRAP exhibit/workshop, please contact:

WRAP Workshop Coordinator  
Sherry Ackerman at 608-445-2517  
or sherrycackerman@frontier.net

Be sure to ask about the workshop start-up incentives!



on the next six pages, you will find:

*What is WRAP?*

*How to Enter a Regional Show*

*Typical Workshop Day*

*WRAP Entry Form*

*Upcoming WRAP Workshops*

Questions?

Contact your local WRAP coordinator (found in listing of upcoming WRAP workshops) or WRAP director:

**Leslee Nelson**

**Wisconsin Regional Art Program**

21 North Park St., Room 7356  
Madison, WI 53703

(608) 263-7814

Toll-Free: 1-877-336-7836

Fax: (608) 262-1694

lnelson@dcs.wisc.edu

[www.dcs.wisc.edu/lsa/art/wrap](http://www.dcs.wisc.edu/lsa/art/wrap)

## WHAT IS THE WISCONSIN REGIONAL ART PROGRAM ~ WRAP?

The Wisconsin Regional Art Program was established to encourage Wisconsin citizens with a serious interest in art. It continues to serve the same purpose today; it is for people who make art purely for the love of it, rather than for fame and fortune. The purpose of WRAP is to encourage non-professional artists to develop their abilities.

You may enter as many Wisconsin Regional Art Workshops as you like. Your artwork will be on exhibit in different communities. Each one has a different artist demonstration or slide lecture, and a different judge to lead the afternoon critique. I'm sure you will learn new things at every workshop. If your work is selected for the State Exhibit at two different workshops, you may choose which ONE you want to send to Madison.

The Wisconsin Regional Artists Association (WRAA) co-sponsors the Statewide Exhibit and Conference at the UW-Madison in September of each year. WRAA members are eligible for awards at the State Exhibit.

Your organization or art club can host an Art Workshop. We plan early, so write to me soon if you'd like to sponsor a workshop next year. We are looking for new places now.

I want to thank the Wisconsin Regional Artists Association, all the coordinators and art clubs who have been so helpful in putting exhibits and workshops together. They are the ones who deserve all the credit for this wonderful opportunity.

I want to thank all of you for your participation over the years. You are what makes WRAP so exciting and important.

**Leslee Nelson, Director, Wisconsin Regional Art Program**

"People should practice an art in order to make their souls grow and not to make money or become famous. Paint a picture! Write!"

-Kurt Vonnegut, Science Fiction Author, [Slaughterhouse 5](#)

*This program is sponsored in part by funds administered through the UW-Extension as part of a coordinated statewide extension program. Please advise the coordinator at the time of registration if you are handicapped and require special accommodations. Requests are kept confidential. UW-Madison provides equal opportunities in employment and programming including Title IX requirements.*

## THE FIRST RURAL ART EXHIBIT

was held at the Memorial Union during Farm and Home Week in 1940. Under the guidance of John Steuart Curry, the exhibit grew rapidly, expanding from 30 non-professional artists in 1940 to over 100 by 1947. The energy and enthusiasm of Curry's Successor, Aaron Bohrod, WRAP Directors, James Schwalbach and Ken Kuemmerlein and the Wisconsin Regional Artists Association have continued to make the exhibition and workshops cornerstones of the activity for artists throughout the state.

## HOW TO ENTER A REGIONAL WRAP EXHIBIT/WORKSHOP

1. Select a workshop. **Send your entry form and \$20.00 entry fee to the coordinator of the workshop you select one week before the artwork is due. Make check payable to the sponsoring group or person of that workshop.**
2. The workshop may be canceled if less than 20 people send in their entry forms. You may enter as many workshops as you like. On the day the artwork is due, take your work to the exhibit site at the time indicated. Be sure to attach an identification label to each piece. **The entry fee covers three pieces of artwork and participation in the workshop.** (The coordinator may limit the number of pieces to fewer than three, depending on the exhibition space.) You may bring guests to the workshop for \$5.00 each. Pick up your artwork at the end of the workshop day.
3. The purpose of this program is to encourage non-professional artists and craftspersons. Everyone is welcome to exhibit. Workshop participants must be 16 years or older.
4. All work must be ORIGINAL in concept and design. It must have been done by the person signing it. Copies of other artwork, copyrighted photographs, published images, advertisements or patterns cannot be accepted. No decorated kits are acceptable. Paintings made as copies during a teacher's demonstrations are not eligible. Work must have been completed within the past two years.
5. All paintings, graphics and photographs must be dry, framed and ready to hang (including a wire, side to side across the back). No tension devices will be accepted in place of frames. (They break.) Any wall-hung sculptures or functional items must be ready with necessary hanging devices. If artwork is over 30" in either height or width, please frame in plexiglass. (They get too heavy with the glass.) Carefully pack small or fragile items. **UW-MADISON, EXHIBIT VENUES AND WORKSHOP SPONSORS AND COORDINATORS ARE NOT RESPONSIBLE FOR DAMAGE OR LOSS OF YOUR WORK.**
6. PLEASE NOTE: There has been a problem with very heavy or over-sized works. If one person cannot carry your over-sized work, you will need to make special arrangements with the workshop coordinator. You will be responsible for moving and hanging your work.
7. Enter up to three works in any media:
  - Painting: Oil, Acrylic, Watercolor
  - Graphics: Drawing, Prints, Paste, Ink, etc.
  - Photography: Black & White, Color
  - Digital: Photo, Print
  - Sculptural or Functional Items: any material, mixed media, medal, clay, wood, fiber, paper, etc.

## TYPICAL WORKSHOP DAY

The Wisconsin Regional Art Program began in 1940 to encourage creative growth in three ways:

1. Your work will be shown in a non-competitive art exhibit in your community. Meritorious work is selected for the Annual State Art Exhibit in Madison.

The workshop on the last day of the exhibit includes:

2. A demonstration or slide lecture by a professional artist.
3. A group critique and evaluation discussion, led by the exhibition judge, will answer your questions on design, composition and technique.

9:00 am	Registration, reception, meet other artists
10:00 am	Guest artist's lecture or demonstration
12:00 pm	Lunch
1:30 pm	Announcement of the State Exhibit and Honorable Mention awards
2:00 pm	Critique, evaluation and discussion of artwork
3:30 pm	Adjourn and take your artwork home



# UPCOMING WRAP WORKSHOPS

## In Progress:

**Black River Falls: Workshop: Saturday August 27, 2011, 9:00 am - 3:00 pm** (all pieces to be picked up by 3:30 pm)

Place: Black River Falls Memorial Library, 222 Fillmore St., Black River Falls, WI 54615

Coordinator: Ginny Schuld, (715) 963-3200 or poodlpad@centurytel.net

**Janesville: Workshop: Saturday, August 27, 2011, 9:00 am - 3:00 pm**

Place: Janesville Performing Art Center, 408 S. Main St., Janesville, WI 52545

Coordinator: Claudiadair Fitzgerald, (608) 754-3358 or (608) 436-9629 cfizartist@gmail.com

**Greendale: Workshop: Saturday, September 10, 2011, 9:00 am - 3:00 pm**

Place: Greendale Public Library, 5647 Broad St., Greendale, WI 53129

Coordinator: Gary Warren Niebuhr, (414) 423-2136 x 225, gary.niebuhr@mcfls.org

Cancelled: Beloit, Saturday, October 29, 2011

## WAUSAU

Entry Blank Due: Tuesday, September 13, 2011 Artwork Due: Sunday, September 18, 2011, 12:00 noon - 4:00 pm

\*Please note: the CVA will retain 33% commission on any artwork sold - price your work accordingly

**Workshop: Sunday, October 15, 2011, 9:00 am - 2:00 pm**

Place: Center for the Visual Arts-"The Loft", 427 4th St., Wausau, WI 54403

Make check payable to sponsor: **WISCONSIN VALLEY ART ASSOCIATION**

Coordinators: Lynn Ott

Lynn Block

409 N. 11th St., Wausau, WI 54403

3190 Evergreen Rd., Marathon, WI, 54448

(715) 848-1204 lynnie63@frontier.com

(715) 443-2151 L2block@frontier.com

## WOODRUFF

Entry Blank Due: Saturday, September 24, 2011

Artwork Due: Saturday October 1, 2011, 9:00 am - 11:00 am

**Workshop: Saturday, October 29, 2011, 9:00 am - 3:00 pm**

Place: Howard Young Medical Center, 240 Maple St., Woodruff, WI 54568

Make check payable to sponsor: **LAKELAND ART LEAGUE**

Coordinator: Jeanette Krueger, 11180 Fox Fire Rd., Arbor Vitae, WI 54568

(715) 356-6470 foxfirecamp@frontier.com

## PLATTEVILLE

Entry Blank Due: Friday, September 30, 2011

Artwork Due: Saturday October 8, 10:00 am - 4:30 pm or Sunday October 9, 2011, 12:00 noon - 4:30 pm

**Workshop: Saturday, November 19, 2011, 9:00 am - 3:30 pm**

Place: Rountree Gallery, 385 E. Main St., Platteville, WI 53818

Make check payable to sponsor: **ROUNTREE GALLERY**

Coordinator: Nicole Felder, Director, PO Box 780, 385 E. Main St.,

Platteville, WI 53818 (608) 348-6719 rtgallery@yousq.net

## FOND DU LAC

Entry Blank Due: Saturday, October 22, 2011 Artwork Due: Saturday, October 29, 2011, 9:00 am - 11:00 am

**Workshop: Saturday November 19, 2011, 10:00 am - 3:00 pm**

Place: Fond du Lac Public Library, 32 Sheboygan St., Fond du Lac, WI 54935

(Exhibit in the Langdon Divers Gallery, workshop in the McLane meeting room, downstairs in the library)

Make checks payable to sponsor: **FOND DU LAC ARTIST'S ASSOCIATION**

Coordinator: Fran Schmid, 1220 Winchester Ave., Fond du Lac, WI 54935

(920) 322-0495 dhschmid@charter.net

## WHITEWATER Winter

Entry Blank Due: Monday, January 2, 2012

Artwork Due: Saturday, January 7, 2012, 10:00 am - 11:00 am

**Workshop: Saturday, January 28, 2012 9:30 am - 3:00 pm**

Place: Cultural Arts Center, 402 W. Main St., Whitewater, WI 53190

Make check payable to sponsor: **WAA (Whitewater Arts Alliance)**

Coordinator: Joyce Follis, 252 S. Ardmor Dr, Whitewater, WI 53190

(262) 473-2360 follisj@charter.net

# UPCOMING WRAP WORKSHOPS

- PRAIRIE DU SAC**  
Entry Blank Due: Monday, January 16, 2012  
Artwork Due: Monday, January 23, 2012, 3:00 pm - 6:00 pm (limit 2 pieces per artist)  
**Workshop: Saturday March 3, 2012, 9:00 am - 3:00 pm**  
Place: River Arts Center, Sauk-Prairie High School, 105 9th St., Prairie du Sac, WI 53578  
Make check payable to sponsor: **CHERYL BREUNIG**  
Coordinator: Cheryl Breunig, E10699 Keitel Rd., Prairie du Sac, WI 53578  
(608) 643-2016 cherylbr3@gmail.com
- MADISON**  
Entry Blank Due: Friday, February 10, 2012 (mail to Vina Yang)  
Artwork Due: Saturday, March 3, 2012, 9:00 am-12:00 noon (Room 111, Pyle Center) (limit 2 pieces per artist)  
**Workshop: Saturday March 24, 2012, 10:00 am - 4:00 pm (In AT&T Lounge, Pyle Center)**  
Place: Pyle Center, UW-Madison, 702 Langdon Street, Madison, WI 53703  
Make checks payable to: **VINA YANG**  
Coordinators C.K. Chang, (608) 833-1485 ckhakka7601@yahoo.com  
Jean Lang, (608) 824-9655 jeanalamo@aol.com  
Vina Yang, 3423 Ice Age Lane, Verona, WI 53593, (608) 798-1005 vyang@aol.com
- RICHLAND CENTER**  
Entry Blank Due: Saturday, February 18, 2012  
Artwork Due: Saturday, March 3, 2012, (2-piece limit)  
**Workshop: Saturday March 24, 2012, 9:00 am - 3:00 pm**  
Place: Schmitt Woodland Hills Retirement Center, 1400 Seminary St., Richland Center, WI 53581  
Make checks payable to sponsor: **RICHLAND AREA ARTS COUNCIL or RAAC**  
Coordinator: Sue Davidson, 14003 Kanton Rd., Blue River, WI 53518  
(608) 536-3656 blueriverfarm@hotmail.com
- HARTFORD**  
Entry Blank Due: Wednesday, February 15, 2012  
Artwork Due: Tuesday, February 28, 2012, 1:00 pm - 5:00 pm (limit 1 piece per artist)  
Exhibit Dates: Friday, March 2 to Sunday, April 15, 2012  
**Workshop: Sunday, April 15, 2012, 1:00 pm - 4:30 pm**  
Place: Schauer Arts & Activities Center, 147 N. Rural St., Hartford, WI 53027  
Make check payable to sponsor: **SCHAUER ARTS & ACTIVITIES CENTER**  
Coordinator: Greg Torgeson, 147 N. Rural St., Hartford, WI 53027  
(262) 844-5257 pawnee333@yahoo.com
- TOMAH**  
Entry Blank Due: Friday, April 5, 2012  
Artwork Due: Wednesday April 11, 2012, 2:00 pm - 5:00 pm  
**Workshop: Saturday May 5, 2012, 9:00 am - 3:00 pm** (all pieces to be picked up by 3:30 pm)  
Place: Community Theatre Building, 907 Kilbourn, Tomah, WI  
Make check payable to sponsor: **TOMAH ARTS GUILD (TAG)**  
Coordinator: Ginny Schuld  
W12658 Charcoal Rd., Hixton, WI 54635, (715) 963-3200 or poodlpad@centurytel.net
- MONROE**  
Entry Blank Due: Friday, March 16, 2012 (limit 2 pieces per artist)  
Artwork Due: Friday, March 23, 2012, 10:00 am-5:00 pm or Saturday, March 24, 2012 9:00 am-1:00 pm  
Opening Reception: Friday, March 30, 2012, 5:00 pm - 7:00 pm  
**Workshop: Saturday, May 12, 2012, 9:30 am – 12:00 noon**  
Place: Monroe Arts Center, 1315 11th St., Monroe, WI 53566  
Make check payable to sponsor: **MONROE ARTS CENTER**  
Coordinator: Dunnell Kendrick, Gallery Director, 1315 11th St., Monroe, WI 53566  
(608) 325-5700 dkendrick@monroeartscenter.com
- EAGLE RIVER**  
Entry Blank Due: Saturday, May 5, 2012  
Artwork Due: Saturday, May 12, 2012, 9:30 am – 11:00 am  
**Workshop: Saturday, June 2, 2012**  
Place: Olson Memorial Library, 203 N. Main St, Eagle River, WI 54521  
Make check payable to sponsor: **HAL (Headwaters Art League)**  
Coordinators: Eleanor Lapp, 2355 South Shore Rd., Land O'Lakes, WI 54540 (715) 547-3595  
Jane O'Brien, PO Box 517, Eagle River, WI 54521 (715) 479-8329 or darby@verizon.net

## UPCOMING WRAP WORKSHOPS

WAUTOMA

Entry Blank Due: Saturday, May 26, 2012  
Artwork Due: Saturday, June 2, 2012, 8:00 am - 10:00 am  
**Workshop: Saturday, June 2, 2012, 10:00 am - 2:00 pm**  
Place: World War II Memorial Building, 440 W. Main St., Wautoma, WI 54982  
Make check payable to sponsor: **RURAL REMBRANDT ART CLUB**  
Coordinators: Lee Fenendael, PO Box 115, Ripon, WI 54971  
(920) 292-0882 trueheart7a3@gmail.com

WHITEWATER

Summer

Entry Blank Due: Wednesday, May 30, 2012  
Artwork Due: Tuesday, June 5, 2012, 9:15 am - 11:15 am (limit one piece per artist)  
**Workshop: Saturday, June 23, 2012, 9:30 am - 3:30 pm**  
Place: Crossman Gallery, UW-Whitewater, 950 W. Main St., Hwy 12, Whitewater, WI, 53190  
Make check payable to sponsor: **MARY LOU LINDROTH**  
Coordinator: Mary Lou Lindroth, 13773 Chevron Dr., Rockton, IL 61072  
(815) 624-8504 marylou1\_1950@yahoo.com

RHINELANDER

Entry Blank Due: Monday, May 14, 2012  
Artwork Due: Monday, May 21, 2012, 12:00 noon - 3:00 pm  
**Workshop: Saturday, July 7, 2012, 9:00 am - 3:00 pm**  
Place: Nicolet College Art Gallery, Nicolet College, Hwy G, Rhineland, WI 54501  
Make checks payable to sponsor: **NICOLET COLLEGE**  
Coordinator: Katy Ralph-Nicolet Art Gallery Director  
P.O. Box 518, Rhineland, WI 54501  
(715) 365-4556 kralph@nicoletcollege.edu

WAUKESHA

Entry Blank Due: Friday, June 1, 2012  
Artwork Due: Saturday, June 9, 2012, 1:00 pm - 3:00 pm (limit 2 pieces per artist)  
**Workshop: Saturday, July 21, 2012, 9:00 am - 3:30 pm**  
Place: Oconomowoc Arts Center, 641 E. Forest St., Oconomowoc, WI 53066  
Make check payable to sponsor: **WAUKESHA CREATIVE ARTS LEAGUE**  
Coordinator: Kathleen Hosch, 467 E. Red Pine Circle, Dousman, WI 53118  
(262) 965-3101 khosch@wi.rr.com

BLACK RIVER  
FALLS

Entry Blank Due: Friday, August 3, 2012  
Artwork Due: Tuesday August 7, 2012, 2:00 pm - 5:00 pm  
**Workshop: Saturday August 25, 2012, 9:00 am - 3:00 pm** (all pieces to be picked up by 3:30 pm)  
Place: Black River Falls Memorial Library, 222 Fillmore St., Black River Falls, WI 54615  
Make check payable to sponsor: **GINNY SCHULD**  
Coordinator: Ginny Schuld  
W12658 Charcoal Rd., Hixton, WI 54635, (715) 963-3200 or poodlpad@centurytel.net

JANESVILLE

Entry Blank Due: Wednesday, July 11, 2012 (mail to L'Atelier Studio, address below)  
Artwork Due: Wednesday, August 1, 2012 10:00 am - 11:30 am  
**Workshop: Saturday, August 25, 2012, 9:30 am - 3:00 pm**  
Place: Janesville Performing Art Center, 408 S. Main St., Janesville, WI 52545  
Make check payable to sponsor: **JANESVILLE ART LEAGUE**  
Coordinator: Claudiadair Fitzgerald, c/o L'Atelier Studio, 509 Laurel Ave, Janesville, WI 53548  
(608) 754-3358 or (608) 436-9629 cfitzartist@gmail.com

GREENDALE

Entry Blank Due: Saturday, July 28, 2012  
Artwork Due: Monday, July 30 to Saturday, August 4, 2012 (Mon-Thurs, 10am-8pm; Fri & Sat, 10am-5pm)  
**Workshop: Saturday, September 8, 2012, 9:00 am - 3:00 pm**  
Place: Greendale Public Library, 5647 Broad St., Greendale, WI 53129  
Make check payable to sponsor: **GREENDALE PUBLIC LIBRARY FOUNDATION, INC.**  
Coordinator: Gary Warren Niebuhr, 5647 Broad St., Greendale, WI 53129  
(414) 423-2136 x 225 fax:(414) 423-2139 gary.niebuhr@mcfls.org

## UPCOMING WRAP WORKSHOPS

LA CROSSE

Entry Blank Due: Saturday, September 22, 2012  
Artwork Due: Wednesday, September 26, 2012, 12:00 noon - 2:00 pm or 6:00 pm - 8:00 pm  
**Workshop: Saturday, October 6, 2012, 1:00 pm - 3:00 pm**  
Place: YMCA North, 400 Mason St., Onalaska, WI 54650  
Make checks payable to sponsor: **LA CROSSE SOCIETY OF ARTS & CRAFTS**  
Coordinator: Carol Witt-Smith, W6056 Ruth Lane Onalaska, WI 54650  
cwitt-smith@centurytel.net (608) 779-5966

FOND DU LAC

Entry Blank Due: Saturday, September 22, 2012  
Artwork Due: Saturday, September 29, 2012, 9:00 am-11:00 am  
**Workshop: Saturday October 27, 2012, 10:00 am - 3:00 pm**  
Place: Fond du Lac Public Library, 32 Sheboygan St., Fond du Lac, WI 54935  
Make checks payable to sponsor: **FOND DU LAC ARTIST'S ASSOCIATION**  
Coordinator: Fran Schmid, 1220 Winchester Ave., Fond du Lac, WI 54935  
(920) 322-0495 dhschmid@charter.net

WOODRUFF

Entry Blank Due: Saturday, September 29, 2012  
Artwork Due: Saturday October 6, 2012, 9:00 am - 11:00 am  
**Workshop: Saturday, November 3, 2012, 9:00 am - 3:00 pm**  
Place: Howard Young Medical Center, 240 Maple St., Woodruff, WI 54568  
Make check payable to sponsor: **LAKELAND ART LEAGUE**  
Coordinator: Jeanette Krueger, 11180 Fox Fire Rd., Arbor Vitae, WI 54568  
(715) 356-6470 foxfirecamp@frontier.com

*It's time to start thinking...*

### **Contour Notes Cover Contest 2012**

*It's time to send your entry for the 2012 Contour Notes Cover Contest!  
The winners are chosen at the fall WRAA Board of Director's meeting in  
September. The winning artworks will be featured on the covers of the  
three regular issue of 2012 Contour Notes. The 2012 theme will be:*

### **"FARMS & BARNs"**

*Interpret this any way you like.... see page 27 for complete details*

## Art Event!

Visit the **5th annual Art in the Park** at Mill Pond Park, along the river in historic downtown Menomonee Falls, WI for a refreshing look at the creative talent of our community through the eyes and from the hearts of local and regional artists. Members of the Art Guild of Menomonee Falls and other local art organizations will be creating their art along the Menomonee River in Downtown Menomonee Falls at Mill Pond Park on Sunday, August 21, 10:00 am – 4:00 pm. The event will take place rain or shine and is free and open to everyone. Artists will set up their supplies and paint, draw, sculpt, or photograph in an open air gallery. Several artists will also display and sell additional works at their stations. There will also be an opportunity to participate in the silent auction. In addition, there will be a children's art activity area near the waterfall. All make-it & take-it art projects and face painting are free for children. Food and beverages will be available for a nominal fee from local vendors. Event maps will be available the day of the event at each artist's station and at the Information booth's located by the bridge on Main Street and the Mill Pond Pavilion. All funds raised will go towards the youth scholarships in our community. For more information contact Terra Chmielewski at terra\_chmielewski@yahoo.com or 414.719.6613.

# "Prints and Printmaking"

2011 Bridging Generations Youth Art Workshop

...continued from page 5



2011

The Madison Children's Museum hosted this year's exhibit and exhibited the artwork in cleverly designed window "frames."



Right; WRAA member Sherry Ackerman with granddaughter, Sammy.



.....

Bridging Generations began in 2004 as part of WRAA's 50th anniversary celebration. The event was conceived to help introduce our youth to WRAA. It has moved around the state each subsequent year, involving different art groups and volunteers. The exhibit has been to Prairie du Sac, Middleton, Milton, Minocqua/Madison, Whitewater and Verona. If your art club or group is interested in coordinating this exhibit in your area, please contact Lisa Humke, WRAA youth programs coordinator at (608)935-5010 or [humkehome@frontier.com](mailto:humkehome@frontier.com). There is an exhibit 'binder' that is available to assist with coordinating the project, making it easier than you think!

# Evening with the Arts Information & Registration

WRAA presents the second annual  
**TINY TREASURES**  
Art Competition

Compete for cash awards in the TINY TREASURES Buy-It-Now online fundraiser to benefit the WRAA Publication Fund.

Use your creative side by making a unique TINY TREASURE so others will take notice. Please see the TINY TREASURES brochure for complete information, available on-line at [www.wraawrap.com](http://www.wraawrap.com). This competition is open to all artists--you do not need to be a WRAA member to participate.

WRAA is proud to host the fourth annual Statewide Teen Art Mentor Program, STAMP exhibit.

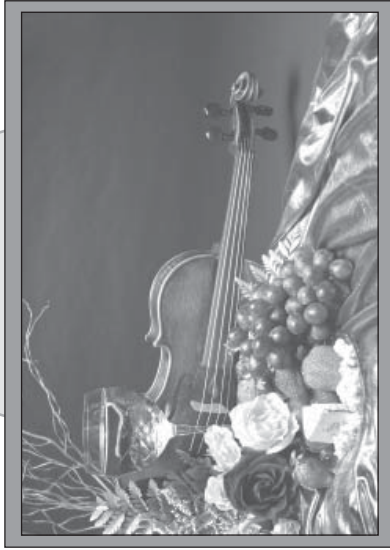
The artwork of this exciting exhibit will be displayed on the third floor of the Pyle Center, at the same time as the annual WRAP State Exhibit, August 6 through September 23, 2011. STAMP exhibitors will be invited to the **Evening with the Arts** reception for an awards ceremony. There will be cash awards for Best of Show, First Place, Second Place and Third Place. Award winning art will be published in the 2011 WRAA color exhibition catalogue.

Registration fee for the STAMP Exhibit includes participation for the teen artist at the 2011 Evening with the Arts gala reception and celebration. Deadline for registration in the STAMP Exhibit is Friday July 22, 2011.

More information is available in the STAMP registration brochure available on-line at [www.wraawrap.com](http://www.wraawrap.com). Questions? Call or e-mail Mary Ann Inman at 608.676.4853 or [inman\\_ma@yahoo.com](mailto:inman_ma@yahoo.com).

.....  
Awards ceremony for TINY TREASURES and the STAMP exhibit will take place at 7:30 pm on Friday evening, September 23, 2011 the evening before the Annual State Exhibit and Conference Day.

Wisconsin Regional Artists Association invites you to come & enjoy...



## Evening with the Arts

A Gala Reception  
& Celebration of Art

Friday, September 23, 2011

6 to 9 o'clock

Pyle Center  
702 Langdon Street  
UW-Madison Campus

Held the evening before the 2011 WRAP Annual State Exhibit and Conference Day

## Important WRAA Membership Information

If you received a membership renewal form with this issue, please renew your WRAA membership now! Your current WRAA membership status is printed on your Contour Notes mailing label. If your records differ, please contact WRAA membership Chair, Beverly Balakhovsky at (608) 237-6362 or [wraa.membership@yahoo.com](mailto:wraa.membership@yahoo.com). Membership registration forms are available on-line at [www.wraawrap.com](http://www.wraawrap.com).

# Evening with the Arts Information & Registration

## Registration for Evening with the Arts

Name \_\_\_\_\_

Address \_\_\_\_\_

City \_\_\_\_\_ State \_\_\_\_\_ Zip \_\_\_\_\_

Phone \_\_\_\_\_

E-mail \_\_\_\_\_

**Important!** Please supply your email address as this is how you will receive your confirmation notice. If you do not have an email address, please let us know and you will be confirmed via the US mail.

\_\_\_\_\_ RSVP the number of persons attending (please include yourself in this number).  
\_\_\_\_\_  
\_\_\_\_\_

Name(s) of guest(s) for pre-printed nametag purposes

### Please enclose:

This completed registration form

Registration fee (\$10.00 for yourself, plus \$10.00 per additional person.)

Please make check payable to: WRAA

**Yes--I would like to help!** Greeters, registration table help, etc. are needed to fill short shifts. Gail will contact you.

WRAA invites you and your guests to our sixth annual *Evening with the Arts*, a gala reception and celebration of art held on the Friday evening preceding the annual WRAP/WRAA State Art Exhibition & Conference.

*Friday, September 23, 2011*

*6 to 9 o'clock*

*Pyle Center*

*702 Langdon Street*

*UW-Madison Campus*

Come & enjoy:

- The outstanding artwork of this year's State WRAP Art Exhibit.
- Beautiful piano music, a fantastic array of hors-d'oeuvres and cash bar.
- TINY TREASURES and STAMP award ceremony at 7:30 pm. (see back)

The registration fee is \$10.00 for yourself plus \$10.00 for each guest. Please invite friends and family to help us celebrate. You do not need to be a State Award winner to attend.

*For planning purposes, pre-registration is preferred, but you may register and/or bring additional guests at the door for \$10.00 per person.*

Questions? Contact:

Gail McCoy:

608.837.4225 or mccoysgkj@yahoo.com

**Please mail registration before  
Wednesday, September 14, 2011 to:**

Gail McCoy  
199 Stagecoach Circle  
Sun Prairie, WI 53590



**View the Statewide Teen Art Mentor Program "STAMP" Exhibit through  
September 23, 2011--Third floor--Pyle Center, 702 Langdon St., Madison WI**

**This year's Evening With the Arts, WRAA's gala celebration is  
Friday, September 23, 2011 at the Pyle Center, UW-Madison.**

**This year's Annual State Art Exhibition and Conference, "State Day" is  
Saturday, September 24, 2011 at the Pyle Center, UW-Madison.**

## 2012 Contour Notes Cover Contest

It's time to start thinking about your entry for the 2012 Contour Notes Cover Contest! The winners are chosen at the fall WRAA Board of Director's meeting. The winning artworks will be featured on the covers of the three regular issue of 2012 Contour Notes. The 2012 theme will be:

### "FARMS & BARNS"

*Interpret this any way you like...*

The deadline for submissions is September 9, 2011 (firm). Cover art should not exceed 7" in width or 8 1/2" in length. Artworks may be re-sized to fit format. Please use black media on white surface. Artwork must be original in concept and design. If your artwork is a copy of a commercial photograph or work that is not your own (such as a magazine photo or illustration), you must have permission from the photographer or original artist. Please include a copy of that permission with your artwork. Submit your original artwork (or high quality photo-copy) by US mail or electronically. Email submissions must be a jpeg image saved at 300 dpi. Paper submitted artworks will be returned to the artist.

Please carefully pack your artwork (no folds) and mail to:

Cheryl Breunig, E10699 Keitel Rd., Prairie du Sac, WI 53578 or email to [cherylbr3@gmail.com](mailto:cherylbr3@gmail.com)

## Thank You

*WRAA would like to thank our supporting advertisers.*

*Members, please return the favor with your patronage of these unique, fun places to shop and learn!*

*If you are interested in being seen by over 500 Wisconsin artists each issue, please contact Contour Notes Editor:*

Cheryl Breunig  
(608) 643-2016 or  
[cherylbr3@gmail.com](mailto:cherylbr3@gmail.com)

## BE CREATIVE

**Come on in. We're happy to help!**

**Art Supplies** - Over 100+ sizes of stretched canvas available, professional and student grade paints, brushes, pastels and more

**Framing** - Quality custom framing and one of Madison's largest selections of readymade frames

**Experience** - Helping local artists with art supplies and framing for 32 years

# LYNN'S

**SUPPLIES FOR CREATIVE PEOPLE**

m-r 10-7, f 10-6, sat 10-5

5928 odana road, madison

608-274-1442 or [www.lynnsofmadison.com](http://www.lynnsofmadison.com)

**10% off for WRAA members**



## WISCONSIN REGIONAL ARTISTS ASSOCIATION

Cheryl Breunig, editor  
E10699 Keitel Road  
Prairie du Sac, WI 53578

Nonprofit  
Organization  
U.S. Postage Paid  
Permit No. 29  
Prairie du Sac, WI  
53578

ADDRESS SERVICE REQUESTED



### 2011 Waupaca WRAP

*State Award winners in attendance on workshop day, (l-r) front: Ryan Radke, Kathy Teichmiller, Adriana Kamenetsky (judge), Bill Dean; back: Lauren Radke, Helen Jensen, Susan DeLain, Pat Spear, Peter Worland, Lee Fenendael. Not pictured, Anthony Gassaway.*

*In this issue:  
A Tribute to  
Ray and Dorothy Spaulding  
Pioneers of Rural Rembrandts Art  
Club and WRAA*



### SUMMER 2011

*Contour Notes* is a quarterly newsletter published by the Wisconsin Regional Artists Association, funded in part by a grant from the Wisconsin Arts Board and the Fond du Lac Area Foundation, Harold C. Berkholz Fund and is mailed quarterly to all members. Deadlines for articles submitted to the editor for publication are the 5th of January, April, July & August-for the color catalogue issue that now replaces the winter issue. The editor reserves the right to select the articles and advertisements for publication.